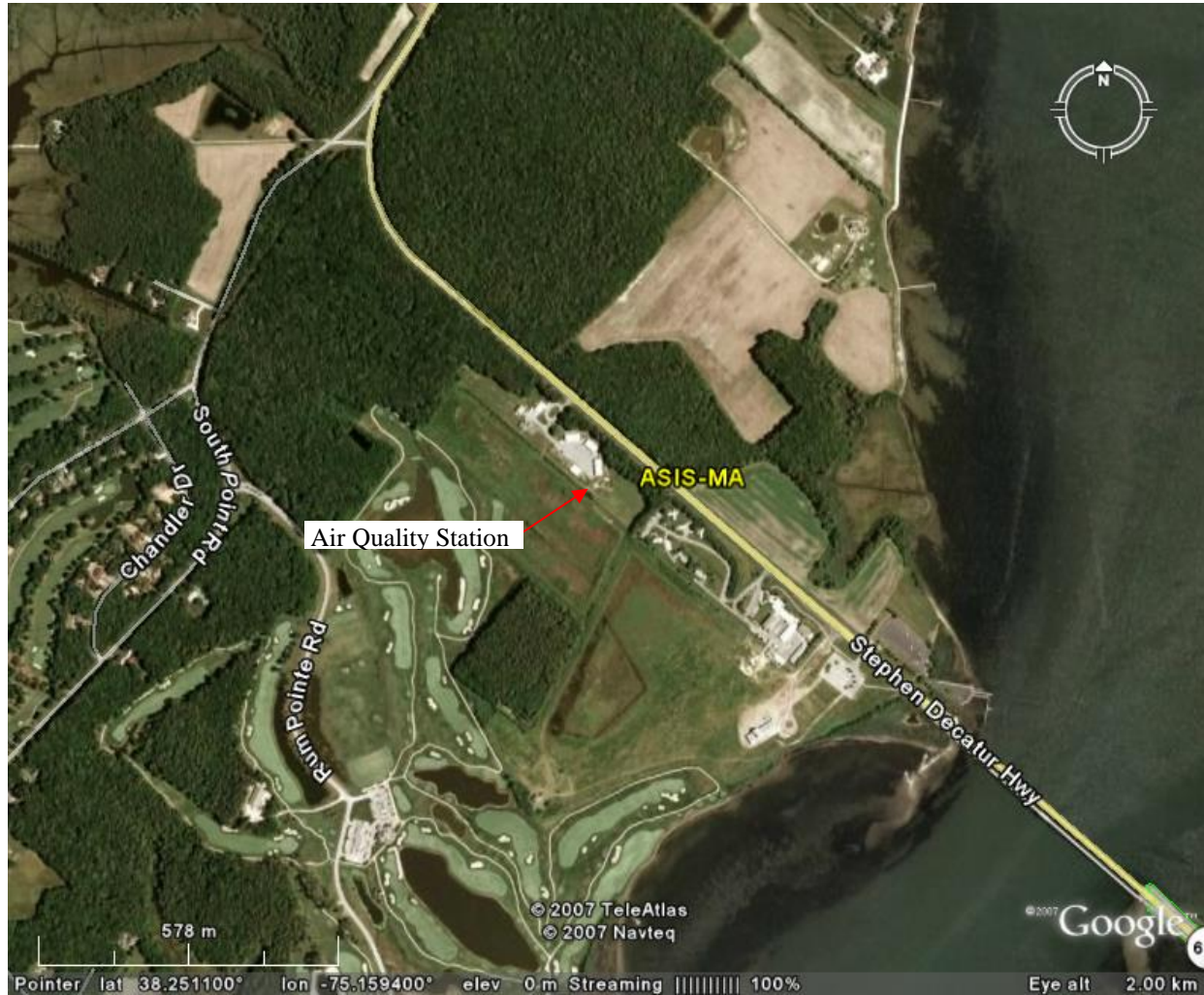


## Assateague Island National Seashore – Maintenance Area



### SITE DESCRIPTION

This site is located northwest of the Barrier Island Visitor Center in the northern part of Assateague National Seashore. Approximately 60 meters southeast of the edge of a maintenance area, the site sits in an open and flat grassy field with a drainage ditch running northwest to southeast about 15 meters to the southwest. About 60 meters to the north and east, trees line the grassy field. The nearest community is Berlin, Maryland, population ~3,500, located about 9 km (6 mi) northwest of the site. The nearest city is Dover, Delaware, population ~32,000, located about 105 km (66 mi) north of the site. The nearest major highway is Interstate 95, located 165 km (102 mi) north of the site.

This site is a part of the Portable Ozone Monitoring Systems (POMS) operated by the NPS. Other monitoring occurring in Assateague National Seashore includes: a National Atmospheric Deposition Program (NADP/NTN) sampler operated by the state of Maryland.